

GROUT S10

A single-component mortar for securing and filling, by pouring. Slightly expansive.

Preparing the substrate:

- ◆ **GROUT S10** is a mortar for the most **important applications**.
- ◆ **GROUT S10** is perfect for filling beneath **anchorage plates**.
- ◆ **GROUT S10** is perfect for **streetlight, handrail, metallic post, street sign, traffic light** anchorage, etc.
- ◆ **GROUT S10** is perfect for sealing fissures or cracks without movement in concrete pavings and bases.
- ◆ **GROUT S10** is an ultra-fluid mortar which is applied by pouring and possesses extraordinary characteristics: resistant to compressions of more than 54 N/mm²!!!



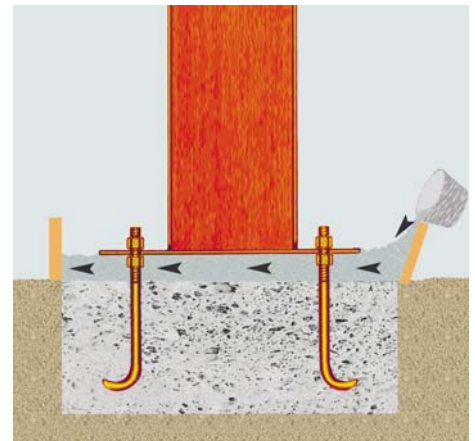
WARNING

Do not use **GROUT S10**:

- ▶ Modifying the formula.
- ▶ Adding more water than the quantity indicated.
- ▶ For uses other than those indicated.
- ▶ To make foundations.
- ▶ At a thickness of more than 8 cm.

Preparing the mixture:

- ◆ Pour 3 litres of water into a large receptacle and slowly add 25 kg of **GROUT S10** to the mixture, stirring with an electric mixer set on slow for 2 to 3 minutes.
- ◆ Do not add more water than the quantity indicated, unless the application is being carried out in extremely hot weather or the substrate is very dry.



Ultra-fluid mortar for filling beneath plates.



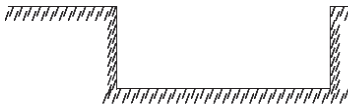
Pour product to **fill all the space**.

Applying the mix:

- ◆ Pour directly into the cavity as soon as the grout is mixed completely with the water.
- ◆ Using a stick or a metal bar, help the product to penetrate and fill all the space.

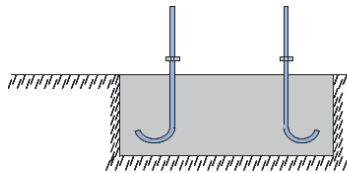
INSTRUCTIONS FOR APPLYING GROUT S10:

1



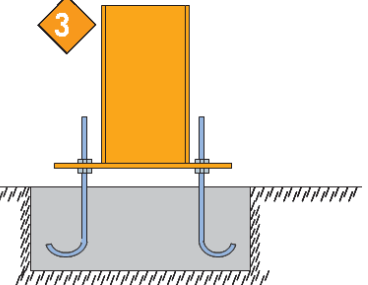
Install the foundations into which we are to install the pillar, lamp post, handrail, etc.

2



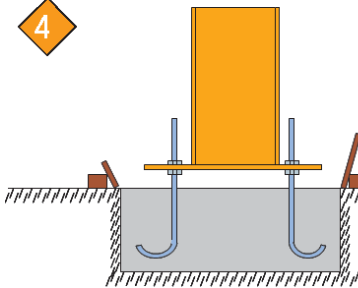
Install the iron bars and fill the foundations with concrete.

3



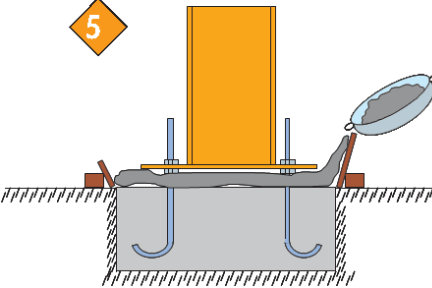
Install the lamp post, metallic pillar, etc., and level with the bolt and lock nut.

4



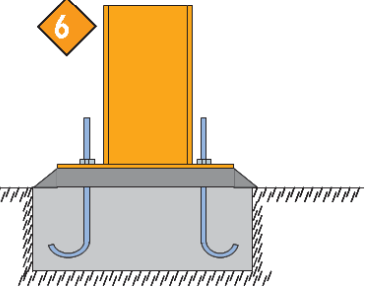
Leave 3 to 8 cm between the concrete and the metallic pillar. Surround with formwork.

5



Mix **GROUT S10** with water and pour. Try to fill the entire space.

6



Remove the wood and dress the base of the metallic pillar.

PROCESS WITH PHOTOGRAPHS:



Once the foundations have been completed, the iron bars installed and the space filled with concrete, install the metallic pillar and level with the bolt and lock nut. Fill the 3 to 8 cm space between the concrete and the base of the pillar with **GROUT S10**. This will give anchorage with the **MAXIMUM** resistance.

CONSUMPTION:

2.0 kg/m² for each mm of thickness.