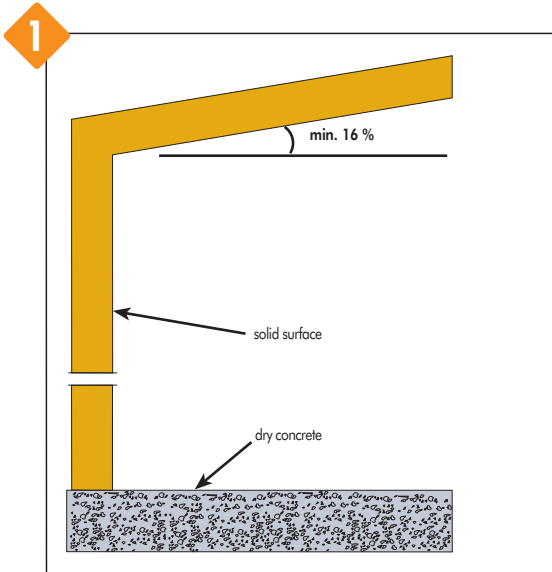




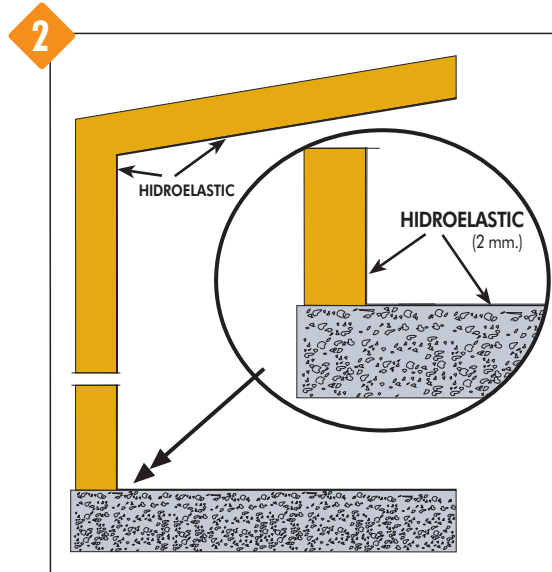
steam rooms



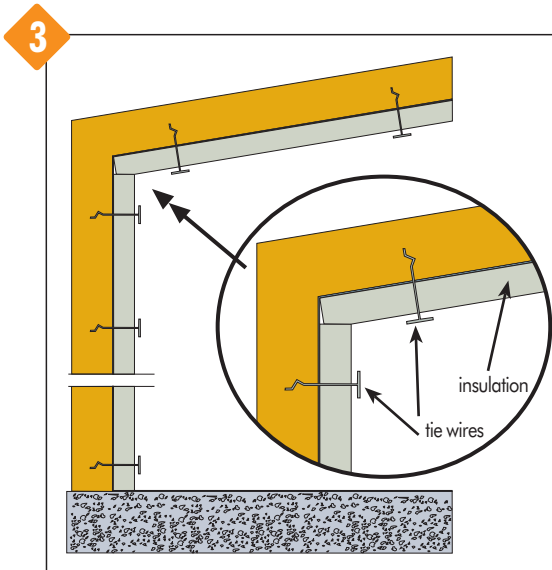
STEAM ROOMS



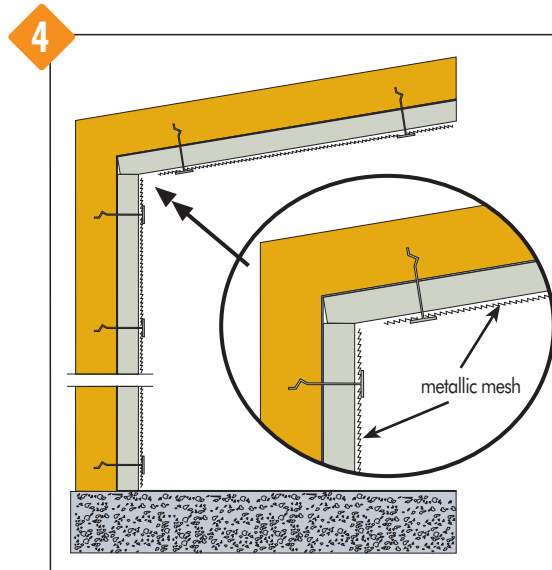
Slope ceilings (minimum 16%) to avoid condensation from dripping onto occupants.



Steam rooms require a waterproofing membrane: two coats of **HIDROELASTIC** on walls, ceiling and floor.



The waterproofing membrane require insulation to protect it from excessive heat. Insulation must be capable of withstanding 115°C.



Attach metallic mesh to tie wires on both walls and ceilings.

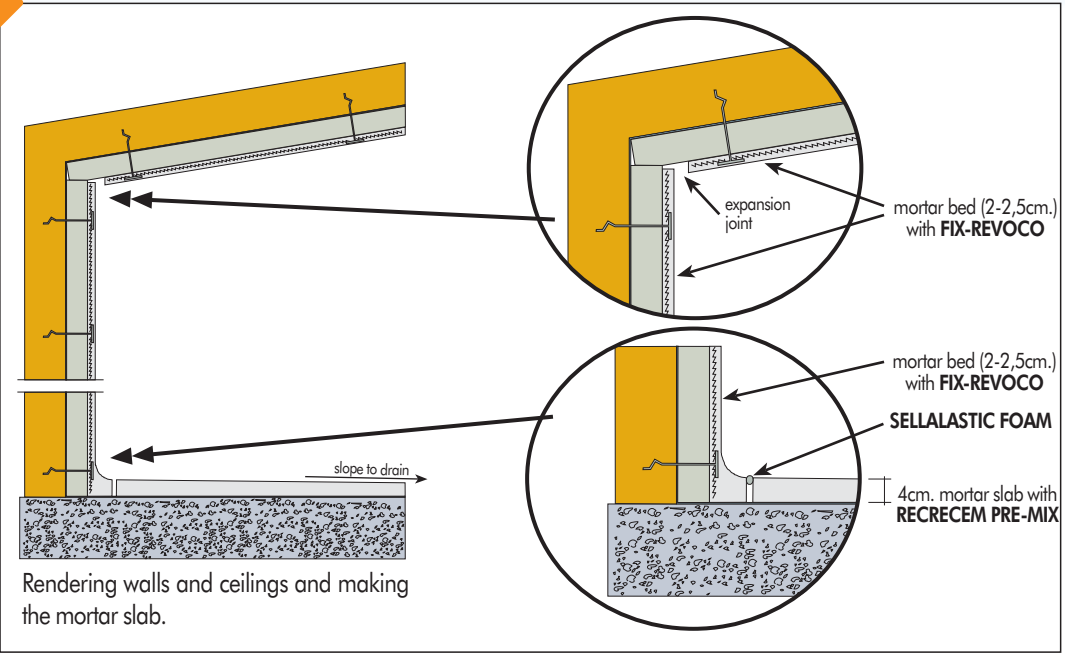




steam rooms



5



6

